

LCC Modelling System

B 70-26R O gauge LNER style signal box - right version

All drawings are not in scale. Some proportions on drawings may differ from reality.

For additional elements for modification and extension please visit our website at www.lcut.co.uk or email us at contact@lcut.co.uk

Width: 250mm (With stairs) Depth: 96mm (Total) Height:155mm

Bundle contains:

- 1x LCC 70-09
- 1x LCC 73-79
- 1x LCC 73-80
- 1x LCC 73-82
- 1x LCC 73-84
- 1x LCC 73-85
- 1x LCC 73-86
- 1x LCC 73-87
- 1x LCC 73-88
- 1x LCC 73-89
- 1x LCC 73-90
- 1x LCC 73-91
- 2x LCC 73-92
- 1x LCC 73-93
- 3x LCC 73-94

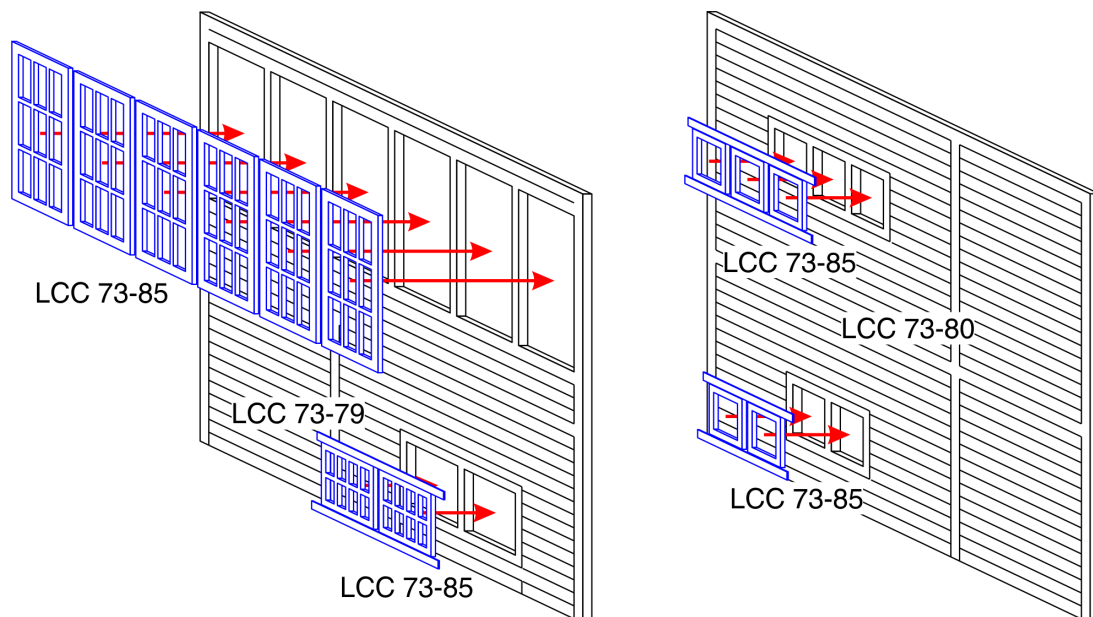


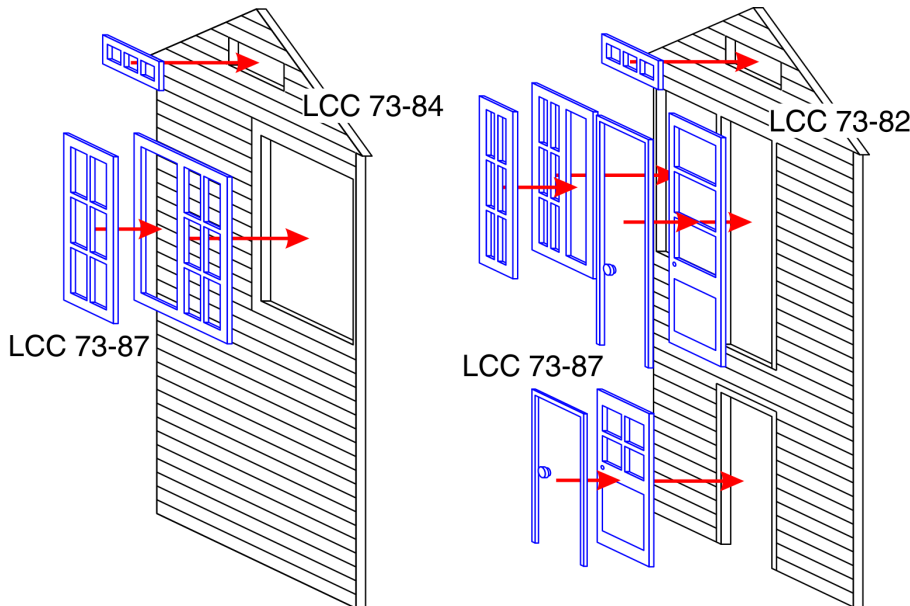
We recommend PVA or any other paper/wood glue for the main fibre board parts and resin based glue for 3D printed parts if present.

Painting recommendation: We recommend using acrylic or enamel paints. There is no need to undercoat the surface but it can be done if desired. The material used is porous and relatively forgiving, heavy coats are unlikely to flood the brickwork. If you experience any warping in the material leave it to fully dry and then gently bend it back into shape. Always test any paints in an area that will not be seen or on spare parts/off cuts.

For more information on how to paint LCUT creative models visit our website and the page titled "Painting guides".

WINDOWS AND DOORS

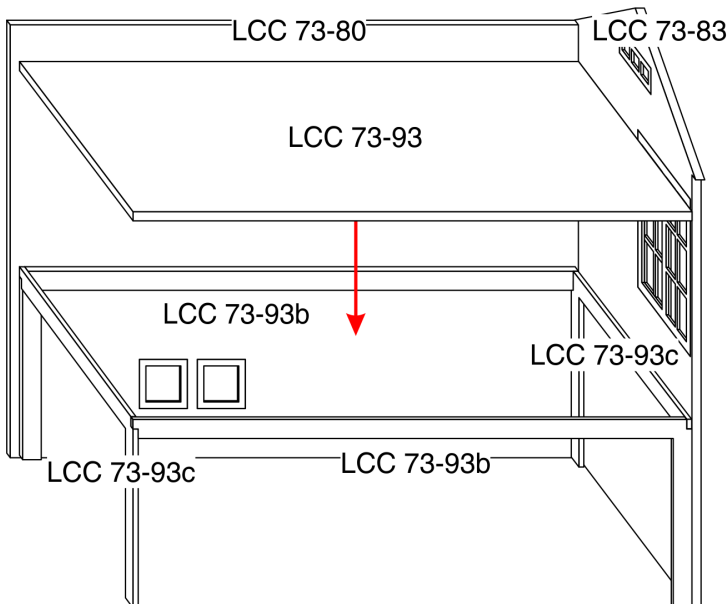




Use the diagrams on previous and this page to mount the windows and doors in the signal box. Pay attention to how the windows on side elevations are positioned. The sliding, top, windows should be facing the rear of the signal box.

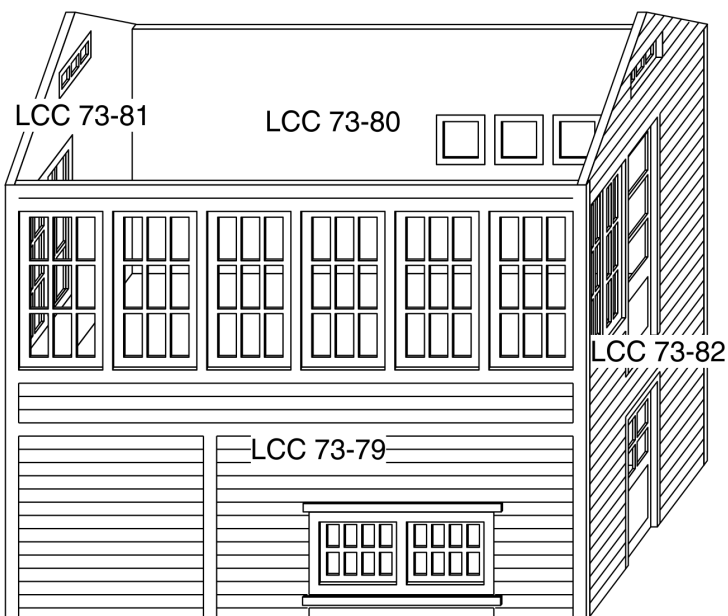
Generally it is advisable to glue in the windows and doors after the signal box body is painted. This way crisper and cleaner lines between them can be achieved.

MAIN BODY

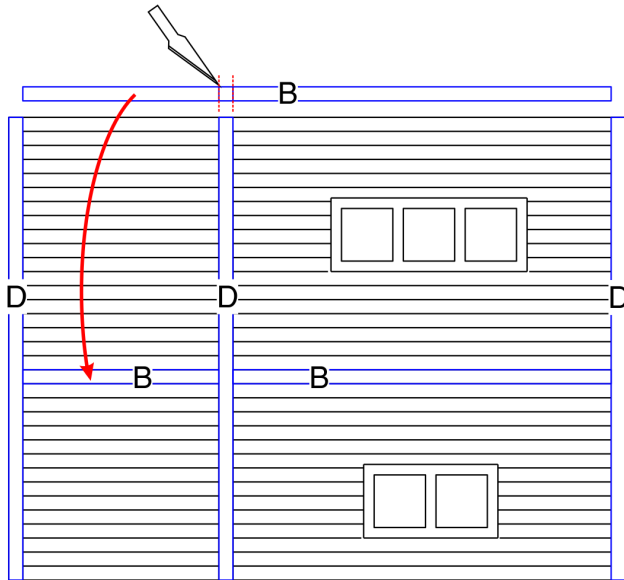
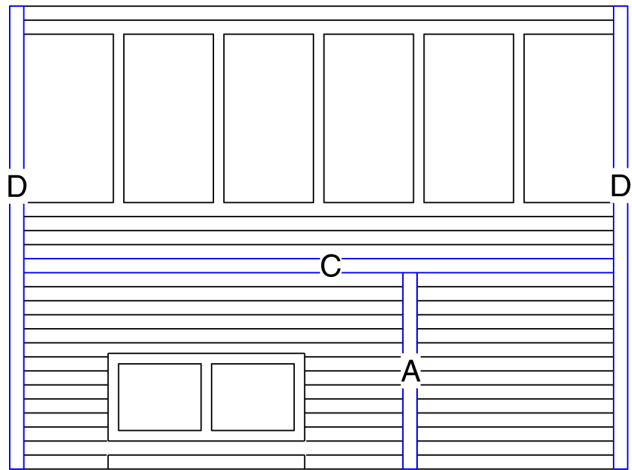
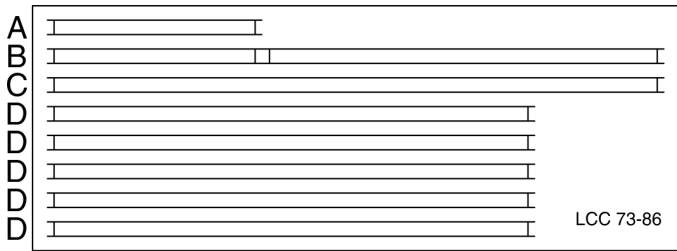


Start the main assembly by joining either the front or the back wall to one of the side walls. Use the floor to strengthen the walls as well as keep them square to each other. Make sure that the back and front walls are overlapping the side walls (the notches near gable on side walls should not be sticking out but be over the front or back wall).

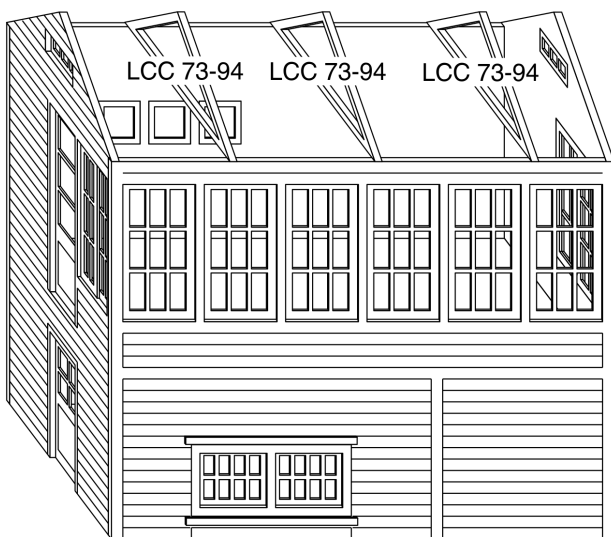
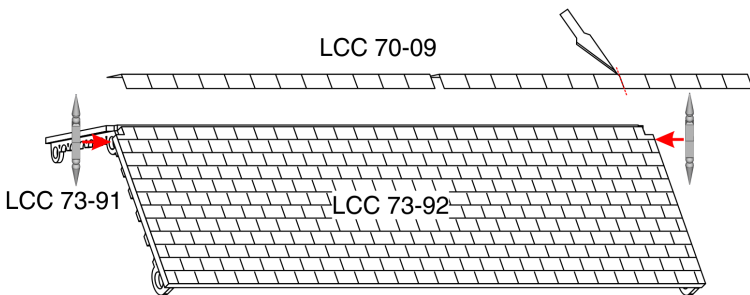
Use the supports from the LCC 73-93 floor kit to ensure the floor is supported at the 4 corners and is placed at even height.



Finish the main body with the remaining walls.



Use the 3 diagrams above to position the raised woodwork elements over the signal box front and back elevations. Note the element B needs to be cut along the scored lines to fit in place.

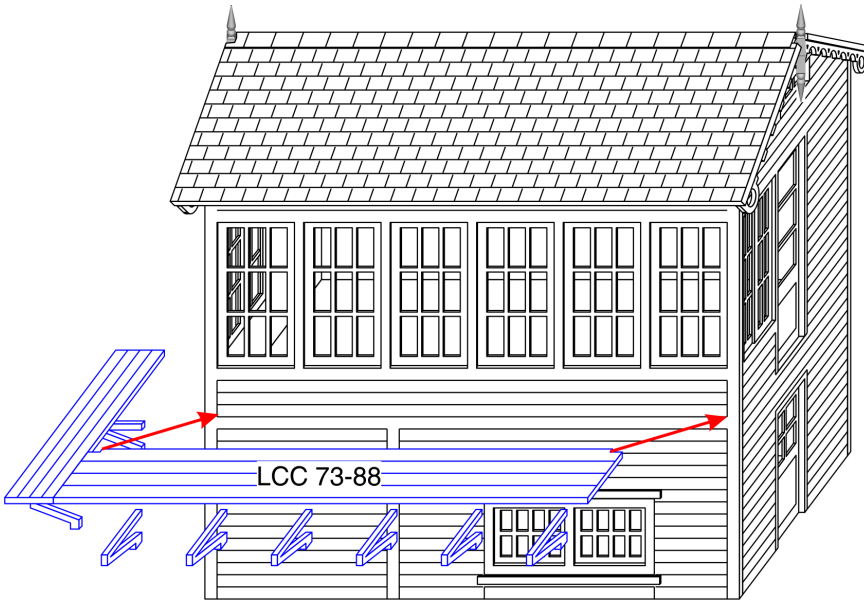


If assembling the roof separate (removable) glue the LCC 73-94 supports to the roof tile panels LCC 73-92. Otherwise glue them to the signal box body. The barge boards LCC 73-91 should be glued to the roof tile panels about flush with the cut out in the top edge of the roof tile panel. They also should not be touching the signal box body. Use the provided LCC 70-09 roof tile strips to complete the roof.



Optional barge board finals (shown on the left) need to be glued from the 2 pieces. Care was taken to clean the 3D printed parts as much as possible but some filing and filling may be required to get an invisible joint.

A simpler laser cut finals are also provided in the kit with LCC 73-91 and can be used instead.



The balcony can be assembled either in the full version or in the front wall version only. Glue the supports from LCC 73-88 to the bottom of the balconies. Mind the cut outs in the balcony so that it clears the raised woodwork and sits flush on the signal box front wall. Glue the balcony to the signal box one plank below the windows (the supports should clear the raised woodwork).

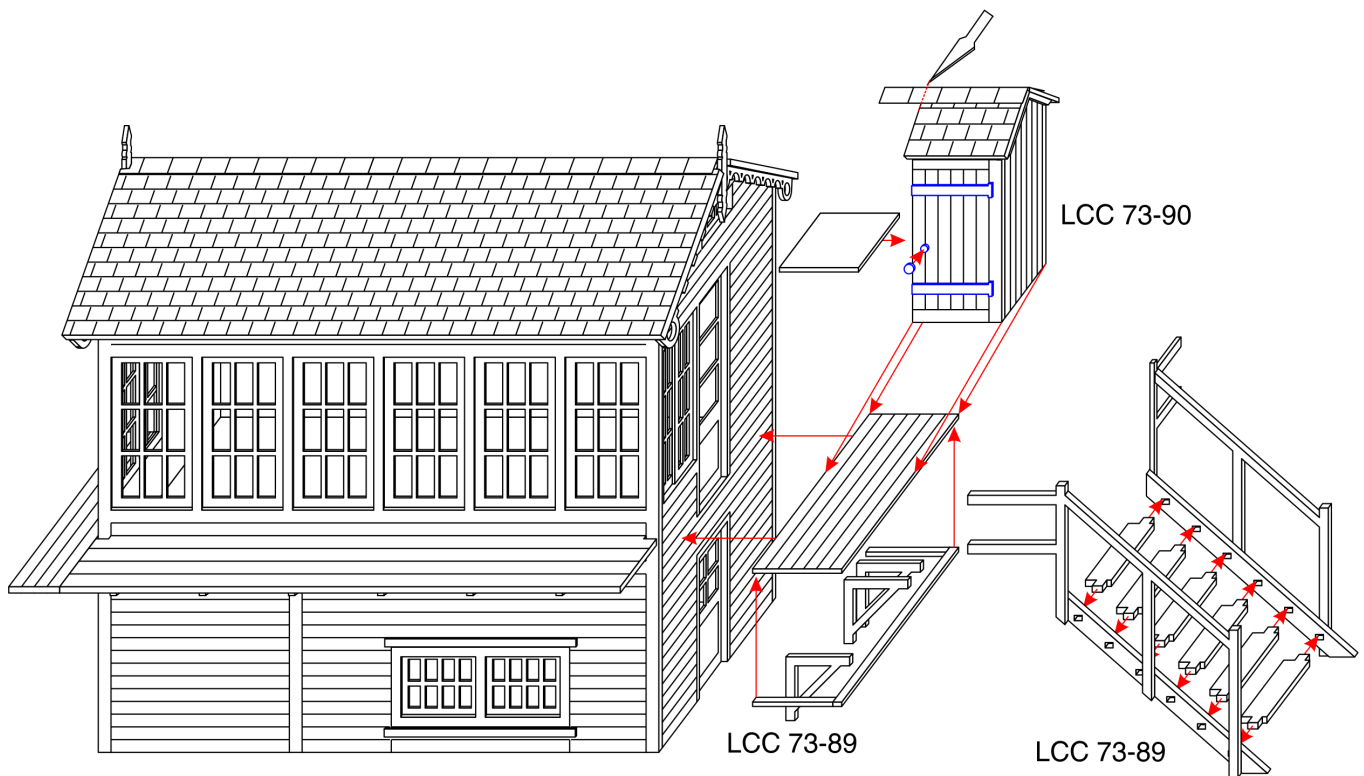


Diagram above shows the assembly of the stairs, stair balcony, and the priv.

Take care as the parts are thin and fragile. Start with the balcony floor. Use the 3 provided strips to build up the thickness on the sides and front. Glue the supports to the bottom (making sure to clear the lower door). Glue that assembly to the signal box.

Assemble the stairs by first inserting the steps in the side parts making sure not to use too much force. Use glue as lubricant to make the insertion easier. Glue the railing to the sides of the staircase rails. Use the engraved lines to help position the railing correctly.

Put the priv together and finish off with the leftover ridge tiles. Glue to the signal box making sure it clears the upper door. Finally glue the staircase to the balcony. The right angle balustrade should overlap the priv a little bit.